

AN ISO 9001:2015 CERTIFIED COMPANY



PLASTIC MANHOLE COVER & PTMT FAUCET COLLECTION

MANHOLE COVER | PTMT FAUCETS | CISTERN | SEAT COVER & ACCESSORIES





About us

ULTRA POLYPLAST is one of the leading manufacturer of Plastic Manhole cover. ULTRA POLYPLAST Is An ISO 9001:2015 CERTIFIED COMPANY. ULTRA POLYPLAST is committed to provide Excellence quality and service to all clients globally.

We have wide range of manhole cover in each and every size so customer can choose as per application. Company has equipped with heavy automatic machinery to provide maximum accuracy and similar quality.

Our vision



On time delivery



Consistent quality



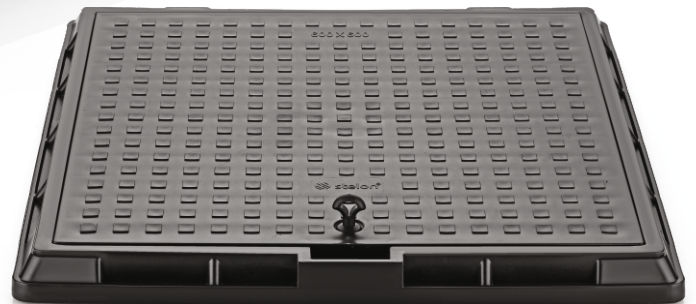
Customer care service



High quality products at competitive prices



CLICK HERE!



Plastic Manhole Cover

Long Life and Durable...

PLASTIC MANHOLE COVER REGULAR

Sr.	SIZE in INCH	SIZE in mm
1	10" X 10"	250 X 250
2	12" X 12"	300 X 300
3	12" X 18"	300 X 450
4	15" X 15"	380 X 380
5	18" X 18"	450 X 450
6	18" X 24"	450 X 600
7	21" X 21"	535 X 535
8	24" X 24"	600 X 600
9	27" X 27"	686 X 686
10	30" X 30"	762 X 762

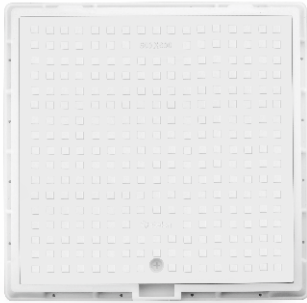
PLASTIC MANHOLE COVER EXTRA HEAVY

Sr.	SIZE in INCH	SIZE in mm
1	18" X 18"	450 X 450
2	18" X 24"	450 X 600
3	21" X 21"	535 X 535
4	24" X 24"	600 X 600
5	27" X 27"	686 X 686
6	30" X 30"	762 X 762

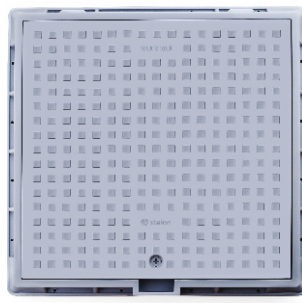
ENGINEERING POLYMER

Our R&D Department is always ready to introduce new products with enhanced features and cost effective solution. After continuous R&D we were successful in developing a cost effective engineering polymer manhole cover with higher load capacity and tensile strength. The product is fabricated from high Grade polymer and some additives to optimize maximum durability and excellent lifespan.

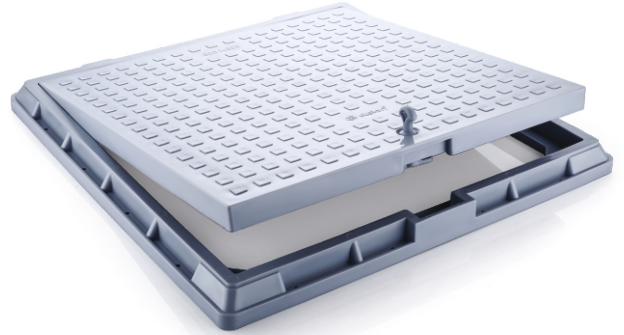
This product is suitable for use in Luxury Row house, villas, Resort, highrise building, under ground parking.



GRAY



MARBLE



IVORY

ENGINEERING POLYMER MANHOLE COVER

Sr.	SIZE in INCH	SIZE in mm
1	12" X 12"	300 X 300
2	18" X 18"	450 X 450
3	18" X 24"	450 X 600
4	24" X 24"	600 X 600
5	27" X 27"	686 X 686
6	21" X 21"	535 X 535
7	30" X 30"	762 X 762

एम एस ई इंजीनियरिंग सेंटर, भारत सरकार, मुंबई, त्र्यु एवं मध्यम उद्यम मंत्रालय, मुंबई - 400 072
MSME Testing Centre, Govt. of India, Min. of MSME, Mumbai - 400 072

टेस्ट रिपोर्ट / Test Report

रिपोर्ट नं./Report No. : MSME/TC-WR/MT/305/01/2019-20
 सैंपल - विवरण / Sample Description : Engineering Polymer Manhole Cover
 मात्रा / Quantity : 01 no. (in two pieces, Sample ID: A & B)
 किया गया परीक्षण / Test Conducted : Compressive Load Test (2.5 Ton for 20 second)
 परीक्षण विधि / Test Specification : Compressive Breaking Load Test (zero to until break)
 परीक्षण परीक्षण : As per Customer's request
 Test Specification : As per Customer's request
 मानक का संशोधन, यदि कोई हो / Amendment of Standards, if any : ---
 परीक्षण प्रारंभ तिथि / Test Commencement Date : 13.02.2020
 परीक्षण पूर्ण होने का तिथि / Test Completion Date : 13.02.2020

अवलोकन / Observations

क्र. सं. / Sr. No.	परीक्षण विवरण / Test Description	मानक विधि / Standard Specification	परीक्षण परिणाम / Test Results	टिप्पणी / Remarks
1.	Compressive Load Test, 2.5 Ton (Sample ID: A)	Shall withstand a Compressive Load of 2.5 Ton for 20 sec without crack.	Applied Compressive Load of 2.5 Ton for 20 second. Observed no crack of the sample during the test.	Satisfactory
2.	Compressive Breaking Load Test, (zero to until break) (Sample ID: B)	---	Compressive Breaking Load observed = 4.01 Ton	---

General Remarks: The above tests have been carried out as per Customer's request.

प्रतिष्ठापित / Issued by: A. G. TELANG
 आस. निदेश (MSME) / Asst. Director (MSME)
 MSME Testing Centre (Govt. of India)
 Mumbai-400 072.

Page 2 of 2

Testing certificate of MSME, Government of India, Mumbai.

WHY USE "STELON" PLASTIC MANHOLE

Description	Stelon	Cast Iron	MS/GI	RCC
Life Cycle	High	Moderate	Low	Moderate
Corrosion Resistance	High	Moderate	Very Low	Moderate
Cost	Low	High	High	Moderate
Finish	Fine	Rough	Modrate	Rough
Handling	Easy	Hard	Hard	Very Hard
Scrap Value	Low	High	High	Low



WEATHERPROOF



HIGH LIFESPAN



EASY HANDLING



SAFE & ANTI SLIPPERY SURFACE

FEATURES

- Weather Proof
- High Life Span
- Easy Handling
- Non Corrosive
- Abrasion Resistance
- Free From Theft
- Safe And Anti Slippery Surface

APPLICATION

- Residential
- Inspection Chamber
- Commercial
- Garden / Landscaping
- Sewer Drainage System
- Best For Coastal Area
- Electrical Earthing
- Walk ways

- ANY COLOR OPTION AVAILABLE IN ENGINEERING POLYMER GRADES ON SPECIAL ORDER
- PLASTIC MANHOLE COVER ALSO AVAILABLE IN RP GRADES AS PER ORDER



FRP MANHOLE COVER

INTRODUCTION

We ULTRA POLYPLAST had strong market present in PLASTIC MANHOLE COVER segment so as per our customer demand we have developed FRP MANHOLE COVER for better quality assurance in all aspects. Our FRP manhole cover comes with Multi Layer technology which provide excellent durability and long life.

WHY TO CHOSE OUR FRP MANHOLE COVER ????

- WE USE 100% PURE RESIN TO OPTIMUM STRENGTH AND LONG LIFE
- OUR MANHOLE COVER COMES WITH CONSISTENT QUALITY
- OUR PURE MATERIAL PREVENTS BENDING PROBLEMS
- ALL PRODUCTS WILL PASSED THROUGH QUALITY INSPECTION AND TESTING
- PRODUCT IS ALSO AVAILABLE IN 1 LAYER, 3 LAYER, 5 LAYER
- ANY COLOUR OPTION AVAILABLE WITH SPECIAL REQUEST ON ADDITIONAL CHARGES
- OUR FRP MANHOLE COVER IS CRACK RESISTANCE



AVAILABLE SIZE

Sr.	SIZE in INCH	SIZE in mm
1	12" X 12"	300 X 300
2	15" X 15"	380 X 380
3	18" X 18"	450 X 450
4	12" X 18"	300 X 450
5	18" X 24"	450 X 600
6	21" X 21"	535 X 535
7	24" X 24"	600 X 600
8	28" X 28"	700 X 700
9	30" X 30"	750 X 750
10	36" X 36"	915 X 915



IN HOUSE LOAD BEARING TESTING FACILITY

PRIME BLUE

P.T.M.T. (Polytetra Methylene terephthalate)



PB - 101 | MRP : 192/-
SHORT BODY BIB COCK
WITH FLANGE
Inner : 24 | Master : 192



PB - 102 | MRP : 200/-
LONG BODAY BIB COCK
WITH FLANGE
Inner : 20 | Master : 160



PB - 103 | MRP : 184/-
ANGLE BIB COCK
WITH FLANGE
Inner : 32 | Master : 256



PB - 104 | MRP : 260/-
PILLAR BIB COCK
WITH FLANGE
Inner : 14 | Master : 112



PB - 105 | MRP : 440/-
SINK COCK WITH
LONG SPOUT
Inner : 9 | Master : 72



PB - 106 | MRP : 460
SWAN COCK WITH
LONG SPOUT
Inner : 9 | Master : 72



PB - 107 | MRP : 480/-
TWO WAY BIB COCK
Inner : 6 | Master : 48



PB - 108 | MRP : 220
WASHING MACHINE
BIB COCK WITH FLANGE
Inner : 24 | Master : 192



PB - 109 | MRP : 220/-
NOZZEL BIB COCK
Inner : 24 | Master : 192

PRIME CRYSTAL

P.T.M.T. (Polytetra Methylene terephthalate)



PC - 201 | MRP : 220/-
SHORT BODY BIB COCK
WITH FLANGE
Inner : 24 | Master : 192



PC - 202 | MRP : 228/-
LONG BODAY BIB COCK
WITH FLANGE
Inner : 20 | Master : 160



PC - 203 | MRP : 212/-
ANGLE BIB COCK
WITH FLANGE
Inner : 32 | Master : 256



PC - 204 | MRP : 288/-
PILLAR BIB COCK
WITH FLANGE
Inner : 14 | Master : 112



PC - 205 | MRP : 468/-
SINK COCK WITH
LONG SPOUT
Inner : 9 | Master : 72



PC - 206 | MRP : 488
SWAN COCK WITH
LONG SPOUT
Inner : 9 | Master : 72



PC - 207 | MRP : 508/-
TWO WAY BIB COCK
Inner : 6 | Master : 48



PC - 208 | MRP : 248
WASHING MACHINE
BIB COCK WITH FLANGE
Inner : 24 | Master : 192



PC - 209 | MRP : 248/-
NOZZEL BIB COCK
Inner : 24 | Master : 192



PRIME DESERT

P.T.M.T. (Polytetra Methylene terephthalate)



PD - 301 | MRP : 192/-
SHORT BODY BIB COCK
WITH FLANGE
Inner : 24 | Master : 192



PD - 302 | MRP : 200/-
LONG BODY BIB COCK
WITH FLANGE
Inner : 20 | Master : 160



PD - 303 | MRP : 184/-
ANGLE BIB COCK
WITH FLANGE
Inner : 32 | Master : 256



PD - 304 | MRP : 260/-
PILLAR BIB COCK
WITH FLANGE
Inner : 14 | Master : 112



PD - 305 | MRP : 440/-
SINK COCK WITH
LONG SPOUT
Inner : 9 | Master : 72



PD - 306 | MRP : 460
SWAN COCK WITH
LONG SPOUT
Inner : 9 | Master : 72



PD - 307 | MRP : 480/-
TWO WAY BIB COCK
Inner : 6 | Master : 48



PD - 308 | MRP : 220
WASHING MACHINE
BIB COCK WITH FLANGE
Inner : 24 | Master : 192



PD - 309 | MRP : 220/-
NOZZEL BIB COCK
Inner : 24 | Master : 192

RETRO CRYSTAL

P.T.M.T. (Polytetra Methylene terephthalate)



RC - 401 | MRP : 220/-
SHORT BODY BIB COCK
WITH FLANGE
Inner : 24 | Master : 192



RC - 402 | MRP : 228/-
LONG BODY BIB COCK
WITH FLANGE
Inner : 20 | Master : 160



RC - 403 | MRP : 212/-
ANGLE BIB COCK
WITH FLANGE
Inner : 32 | Master : 256



RC - 404 | MRP : 288/-
PILLAR BIB COCK
WITH FLANGE
Inner : 14 | Master : 112



RC - 405 | MRP : 468/-
SINK COCK WITH
LONG SPOUT
Inner : 9 | Master : 72



RC - 406 | MRP : 488/-
SWAN COCK WITH
LONG SPOUT
Inner : 9 | Master : 72



RC - 407 | MRP : 508/-
TWO WAY BIB COCK
Inner : 6 | Master : 48



RC - 408 | MRP : 248
WASHING MACHINE
BIB COCK WITH FLANGE
Inner : 24 | Master : 192



RC - 409 | MRP : 248/-
NOZZEL BIB COCK
Inner : 24 | Master : 192



RERTO DESERT

P.T.M.T. (Polytetra Methylene terephthalate)



RD - 501 | MRP : 192/-
SHORT BODY BIB COCK
WITH FLANGE
Inner : 24 | Master : 192



RD - 502 | MRP : 200/-
LONG BODAY BIB COCK
WITH FLANGE
Inner : 20 | Master : 160



RD - 503 | MRP : 184/-
ANGLE BIB COCK
WITH FLANGE
Inner : 32 | Master : 256



RD - 504 | MRP : 260/-
PILLAR BIB COCK
WITH FLANGE
Inner : 14 | Master : 112



RD - 505 | MRP : 440/-
SINK COCK WITH
LONG SPOUT
Inner : 9 | Master : 72



RD - 506 | MRP : 460/-
SWAN COCK WITH
LONG SPOUT
Inner : 9 | Master : 72



RD - 507 | MRP : 480/-
TWO WAY BIB COCK
Inner : 6 | Master : 48



RD - 508 | MRP : 220/-
WASHING MACHINE
BIB COCK WITH FLANGE
Inner : 24 | Master : 192



RD - 509 | MRP : 220/-
NOZZEL BIB BOCK
Inner : 24 | Master : 192

RERTO WHITE

P.T.M.T. (Polytetra Methylene terephthalate)



RW - 601 | MRP : 192/-
SHORT BODY BIB COCK
WITH FLANGE
Inner : 24 | Master : 192



RW - 602 | MRP : 200/-
LONG BODAY BIB COCK
WITH FLANGE
Inner : 20 | Master : 160



RW - 603 | MRP : 184/-
ANGLE BIB COCK
WITH FLANGE
Inner : 32 | Master : 256



RW - 604 | MRP : 260/-
PILLAR BIB COCK
WITH FLANGE
Inner : 14 | Master : 112



RW - 605 | MRP : 440/-
SINK COCK WITH
LONG SPOUT
Inner : 9 | Master : 72



RW - 606 | MRP : 460/-
SWAN COCK WITH
LONG SPOUT
Inner : 9 | Master : 72



RW - 607 | MRP : 480/-
TWO WAY BIB COCK
Inner : 6 | Master : 48



RW - 608 | MRP : 220/-
WASHING MACHINE
BIB COCK WITH FLANGE
Inner : 24 | Master : 192



RW - 609 | MRP : 220/-
NOZZEL BIB BOCK
Inner : 24 | Master : 192



FLUSH Tank collection



SILVER FLUSH TANK WITH SIDE HANDLE
MRP : 1140/-



SUPER FLUSH TANK WITH TOP PUSH
MRP : 1320/-

Toilet seat Cover collection



ANGLO INDIAN SEAT COVER
MRP : 620/-



EWC REGULAR SEAT COVER
MRP : 580/-

Health Faucet collection

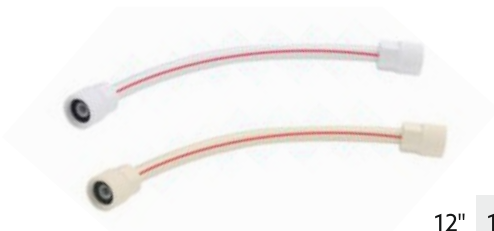


WHITE
HEALTH FAUCET WITH 1 MTR TUBE AND HOOK
MRP : 540/-
ONLY GUN MRP : 260/-



CHROME
HEALTH FAUCET WITH FLEXI TUBE AND HOOK
MRP : 820/-
ONLY GUN MRP : 380/-

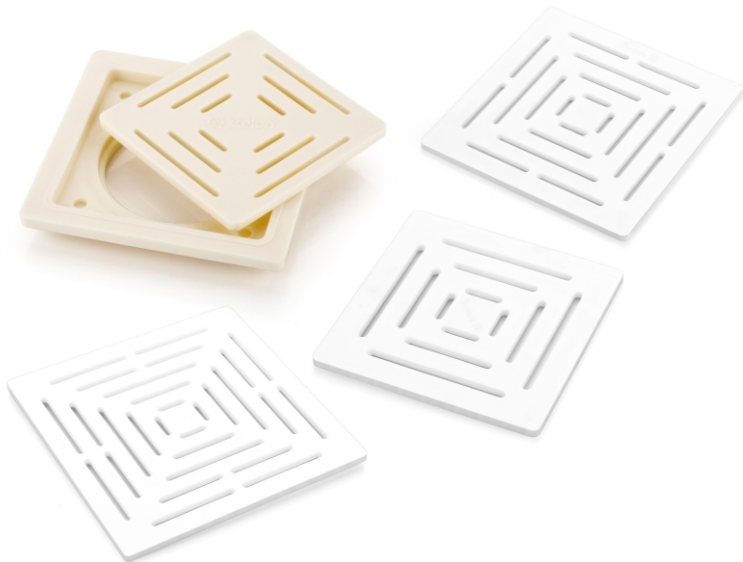
PTMT CONNECTION PIPE WITH KEY



TESTED ON HIGH PRESSURE FOR HOT AND COLD WATER

AVAILABLE SIZE

12" 18" 24" 30" 36" 48"



ENGINEERING POLYMER GRATING (NEW)

Sr.	PRODUCT	MRP
1	ENGINEEING POLMER GRATING - 5" ROUND	100/-
2	ENGINEEING POLMER GRATING - 6" X 6"	140/-
3	ENGINEEING POLMER GRATING - 8" X 8"	260/-
4	ENGINEEING POLMER GRATING - 10" X 10"	440/-
5	ENGINEEING POLMER GRATING - 12" X 12"	560/-
6	ENGINEEING POLMER GRATING - TWO PCS 6" X 6"	180/-
7	ENGINEEING POLMER GRATING - ANTI-COCKRAOCH	320/-



INSTALLATION GUIDELINES

- Shut off main water supply.
- Drain the water from pipes to remove any dirt or trash from pipe line or tank.
- Check the pipeline and fittings properly make sure there will be no any kind obstacles,Clean it properly to avoid trapped in between ceramic disc of cartridge.
- Use standard quality teflon tape on thread properly
- Install flange beside the thread and check the length and position properly
- If required cut the thread length according to fittings
- Do not over tight tap for position adjustment to prevent breakage.
- Use only adjustable wrench
- Never use pipe wrench
- Thank you for choosing us wish you very pleasant experience with us,
Although our taps are made to work much longer than the warranty periods,
Proper maintenance and installation by skilled professionals are highly needed
To get optimum performance



WARRANTY TERMS & CONDITION

PRODUCT DESCRIPTION	RESIDENTIAL USE	COMMERCIAL USE
PTMT Taps Cartridge	3 Year	1 Year
PTMT Taps Body	Nil	Nil

Warranty only applicable to domestic sales only for any sales out side of INDIA warranty will be not applicable. The Warranty is not valid or effective if the products are not installed as per guidelines. Warranty shall applicable against manufacturing defects only. No warranty for breakage or damage due to improper installation or handling. Warranty period will start from date of invoice and shall automatically terminate upon a time period as explain even if products has not installed after purchase or has been in the use for any part or whole of warranty period for any reason. This warranty is effective upon proper presentation of proof of purchase / invoice, the company is not liable for any kind of faulty installation. In the event of any replacement or repair of any part company has right to check and inspection of full product, and also discretion of repair or replacement of any parts. We do not provide door step service to at location. Buyer has to send the faulty items to factory premises along with all applicable logistic transportation charges. Company will not be responsible for any kind of delay in replacement or repair due to unavailability of parts. All replacements and warranty communication with authorized dealer or Distributor only if any customer has issue they may contact the seller from where product was purchased. The company will not liable to pay any kind of damage arising with any products also not liable to pay any civil charges or uninstallation charges for same due to any fault of products.

OUR NETWORK!



stelon®

Mfg. By:

ULTRA
POLY PLAST

Authorised Distributor

